



TcpGPS for Android

Unit 6. Stake Out



Unit 6. Stake Out

Index

Application Settings

Setting out Points

Map Mode

Compass Mode

Target Mode

Augmented Reality Mode

Setting out Lines

Setting out Polylines

Application Settings

- Reference
- Tolerances
- Distance for target mode
- Auto next point
- Use voice indications

Stake out
Stake Out Mode Movement
Horizontal Tolerance 0.03
Vertical Tolerance 0.04
Target Mode Distance 2.0
Next point

Stake Out Mode
<input checked="" type="radio"/> Movement
<input type="radio"/> North
<input type="radio"/> Last Point
CANCEL




Setting out Points

- Point selection
 - Select on map
 - Point number interval
 - Point code
- Differences of coordinates are stored
- Point symbology

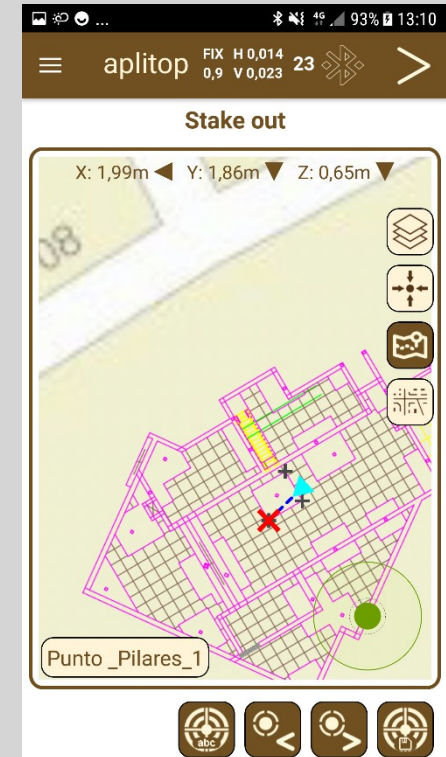
 Change stake out mode

 Next point

 Previous point

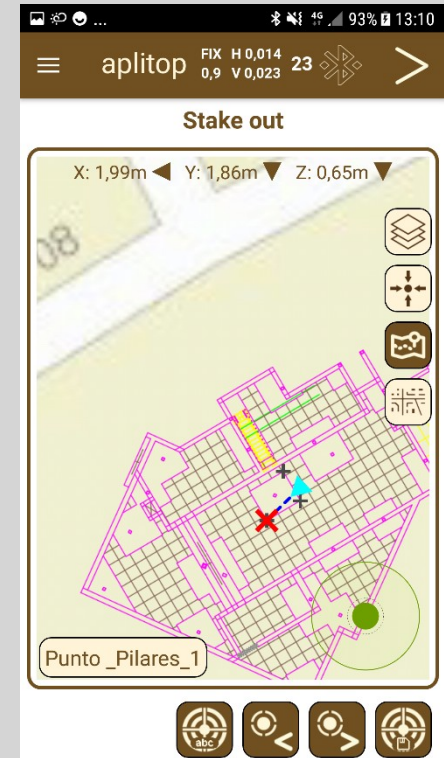
 Select points by code

 Stake out point



Map Mode

- Convenient for far points
- Point information: difference of coordinates

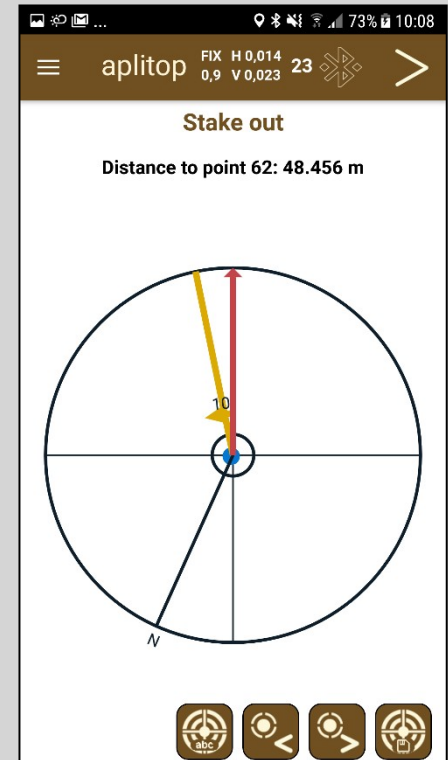
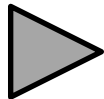


Video 

Compass Mode

- It requires magnetometer
- Convenient for locating far points
- Point Information: distance to point
- Graphic representation
 - North
 - Orientation to point (red)
 - Current orientation (yellow)

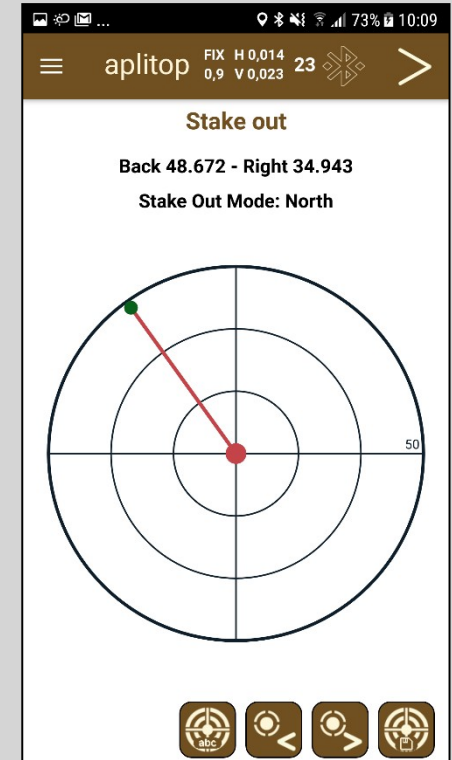
Video



Target Mode

- Convenient for near points
- Information
 - Ahead/Back
 - Left/Right
 - Up/Down

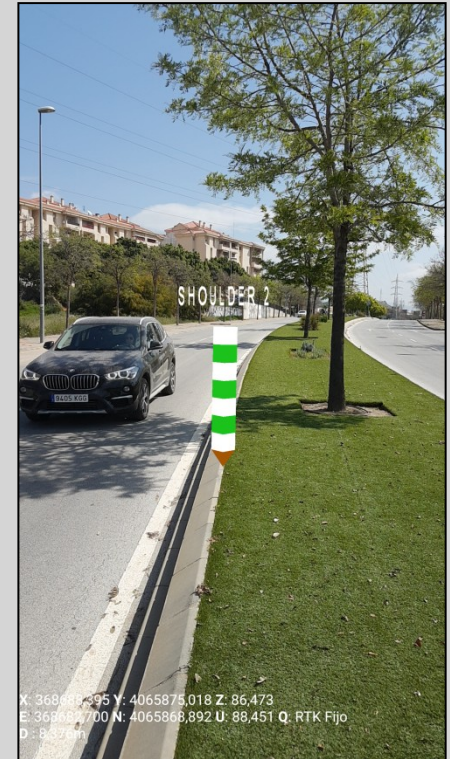
Video 



Augmented Reality Mode

- It requires magnetometer and accelerometer
- Setup offset between receiver and camera
- Very sensitive for interference
- Low accuracy

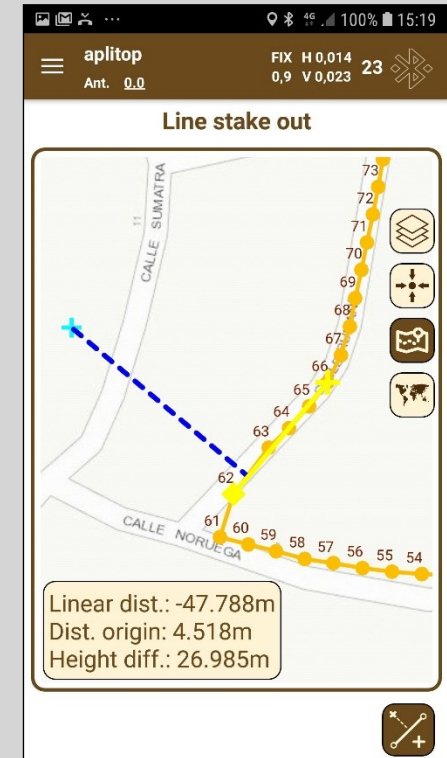
Video 



Setting out Lines

- Select first and second points
- Information
 - Distance to line
 - Distance to origin
 - Elevation difference

Video 



Setting out Polylines

- Select object from layer
- Stake out polyline vertices
- Information:
 - Difference of X,Y,Z coordinates

Video 

